



Advanced Perimeter Systems

Intruder Deterrent and Detection

Electro-Fence™ is a powerful intruder deterrent, which can be attached to an existing perimeter fence or used as a stand-alone fence.

The obvious physical presence of the fence and bright yellow warning signs are visually off-putting to any potential intruder and present a potent front-line deterrent.

Any attempt to cut or climb the Electro-Fence™ is met by a non-lethal but very unpleasant shock and attempts to short circuit, reduce the voltage or breach the fence in any way generates an immediate alarm.

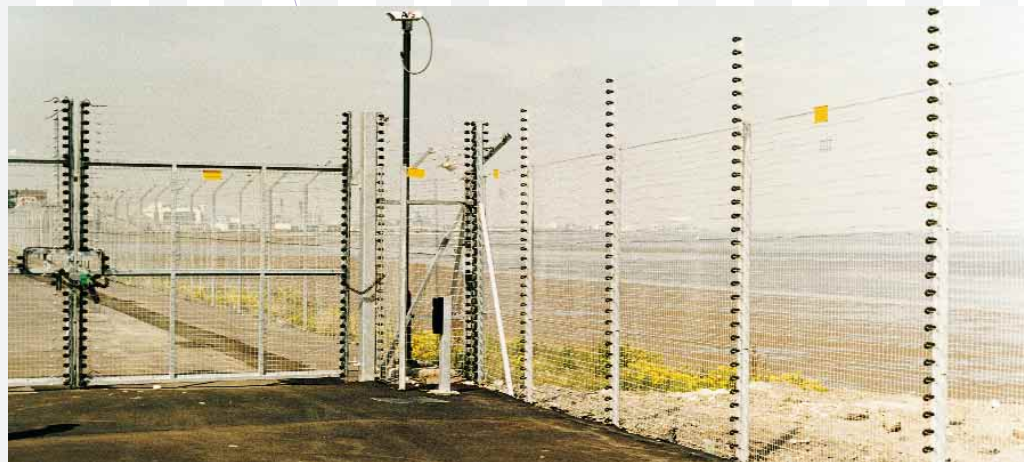
Latest Technology and Safety

High tensile wires, spaced at a distance of 95mm apart, carry a high voltage pulse down alternate wires every second. The wires alternate between live and earth and to ensure absolute security, a controller continuously monitors Electro-Fence™ for different types of attack generating an alarm when pre-programmed conditions are met.

Electric fence controllers have an impeccable safety record. The high voltage pulse is less than one thousandth of a second in duration.

All controllers have been manufactured to exceed European standards:

EN61011; EN61011/1; EN61011/2.



Key Features

- Visual & physical deterrent to intruder
- Shock, voltage & short circuit monitoring
- Cut & Climb monitoring
- Controller continuous monitoring
- Interfaces with standard security equipment

Ultimate security and easy to operate

The Electro-Fence™ system can be broken down into zones so that the controller immediately recognises the attempted entry location. The Electro-Fence™ readily integrates and interfaces with standard security equipment.

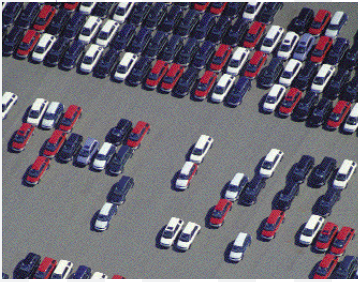
In the event of power failure, uninterrupted power is supplied by a battery back-up system.

Electro-Fence™ Controls

Available in single or dual zone controllers, which are fence mountable. There is no requirement for H.T. lead-cut cable ducts. A six zone controller is available for larger installations.

Help and Support

Electro-Fence™ is manufactured in the UK by Advanced Perimeter Systems Limited and our expert team is always on hand to give advice and support where needed.



Specifications

No. of Zones	1, 2, or 6 Zone Controller
Fence Output Voltage	10 KV
Output Power	2.5 J
Alarm Voltage	2, 3 or 4 KV Selectable
Pulse Count	2, 3 or 4 Missing Pulses Selectable
Indicators per Zone	Alarm LED, Fence Monitor LED
Control Input	12V up to isolated
Alarm Output	Normally closed dry contact
Power Requirements	24V DC or 110/230VAC
Enclosure	External IP56
Size	500 x 400 x 150mm



**Advanced
Perimeter
Systems**

Advanced Perimeter Systems Ltd, 16 Cunningham Road,
Springkerse Industrial Estate, Stirling, FK7 7TP, UK

Tel: +44 (0) 1786 479 862 Fax: +44 (0) 1786 470331

Web site: www.apsltd.net E-mail: sales@apsltd.net

